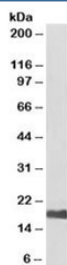


UBE2I Antibody [Biotin Conjugate] (R35903BTN)

Catalog No.	Formulation	Size
R35903BTN	0.5 mg/ml in 1X TBS, pH7.3, with 0.5% BSA (US sourced) and 0.02% sodium azide	100 ug

[Bulk quote request](#)

Availability	1-3 business days
Species Reactivity	Human, Mouse, Rat
Predicted Reactivity	Dog
Format	Biotin Conjugate
Clonality	Polyclonal (goat origin)
Isotype	Goat Ig
Purity	Antigen affinity
Gene ID	7329
Applications	Western Blot : 0.5-1ug/ml Immunohistochemistry (FFPE) : suitable Immunocytochemistry : suitable ELISA (peptide) LOD : 1:64000
Limitations	This UBE2I antibody is available for research use only.



Western blot testing of human kidney lysate with UBE2I antibody at 0.5ug/ml. Predicted/observed molecular weight: ~17kDa. An NAP blocker was used in place of non-fat milk as blocking solution and diluent. (1)

Description

Additional name(s) for this target protein: Ubiquitin-conjugating enzyme E2I

Application Notes

Optimal dilution of the UBE2I antibody should be determined by the researcher.

1. Do not use a blocking agent or diluent that contains biotin (including milk and some BSA preparations) when testing with biotinylated antibodies. A non-animal protein (NAP) blocker is recommended.

Immunogen

Amino acids SGIALSRLAQERK were used as the immunogen for this UBE2I antibody.

Storage

Aliquot and store the UBE2I antibody at -20oC.